

9/14/2020

Hollywood Controls Inc.

www.hollywoodcontrols.com

888-318-2380

Toyota Tacoma 2005-2020

Steel D/V-Ring Tie Down Kit (2)

5 Minute Painless Installation

pn: TA64002/4/12/14

Description

Please note instructions here are for both D & V ring parts! Not all versions are pictured below, but assembly is identical.

This listing is for a pair of D/V-Ring Tie-Downs for your Tacoma. We make it a painless, no drilling installation! We supply plated steel 2" D/V-Rings with 400# working/1200# breaking strength welded rings. We supply factory original Toyota bed bolts. These fit all Tacoma beds from 2005 to 2019!

Your Taco came with 2 rear bed tie-downs and a weak rail system. You have NO WAY to tie cargo to the bed at the front or center. Buy one of our kits to do front or center. Buy two kits to do them both!

We don't like the Toyota D-Ring kit for mounting through the composite bed at the front sides. They are not at floor level, the backing plates are small and the composite bed can flex or crack under load.

Installation:

You need only one tool for this job. A T55 Torx bit is used to remove your old bolts and install the new ones. They should come out easily, but in corrosive environments, some WD40 may help. We have included some photos from under the bed to show access holes where you can apply WD-40 spray lubricant before removing old bolts. If they are stiff, work them back and forth with lube. Some customers have also recommended wire brushing exposed bolt ends where accessible in the frame.

Be sure to assemble them correctly. Slide the D-Ring onto the bolt with the larger face up (non-dimpled), then slide on the washer. Carefully hand-thread the new bolt assembly into the bed, being cautious not to cross-thread the bolt. Orientate as shown in the pictures and tighten firmly.

There is no clear torque spec, as you are clamping composite above a spacer tube.

Do not try to have the D-Ring swivel around the bolt as the factory ones do. These bolts keep your bed on the truck! Correctly installed, your new D-Rings will fold down neatly towards the center of the bed below the ribs.

NOTE: Because the OEM bolt head, as originally installed, is flush with the top of the bed ribs, your new D/V rings will be slightly proud of the top of the bed ribs by 0.130-0.160 in. Please take this into consideration.

Content

- 1 kit - Tacoma Tie-Down Kit with 2 Bolts & D/V-Rings sku # TA64002/4/12/14



Figure 1
TA64002 KIT



Figure 2
Left Center Install



Figure 3
Left Front Install

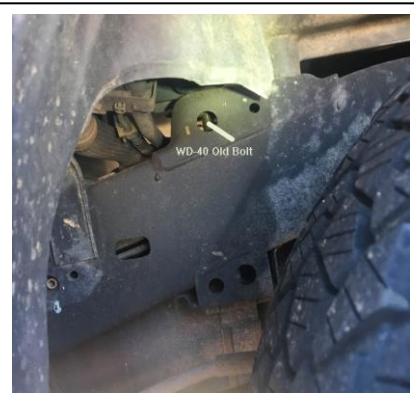


Figure 4
Left Front Bolt Lube Location



Figure 5
Left Center Bolt Lube Location



Figure 6
Right Center Bolt Lube Location



Figure 7
TA64004 KIT



Figure 8
Mounted Front Left